

# Scripturedoodle

## WEEKLY DEVOTIONAL

### EXAMINE YOUR FAITH

***“Examine yourselves to see if your faith is genuine. Test yourselves. Surely you know that Jesus Christ is among you; if not, you have failed the test of genuine faith.”***

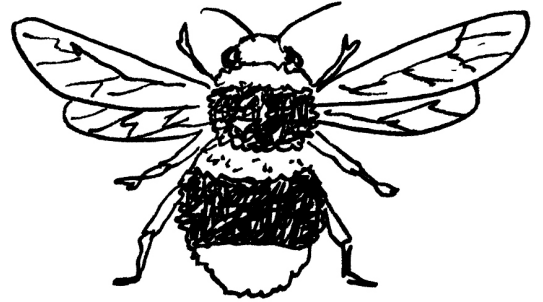
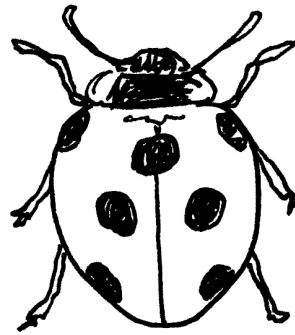
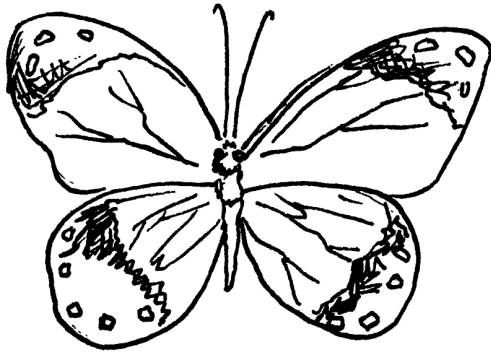
***-2 Corinthians 3:15***

It's important to examine our faith because it allows us to take a sort of heart inventory. We can ask ourselves, is my faith genuine? Do I really trust God? As believers it's so important that we display our faith in Christ not as a banner of pride, but as the story of God, because people are watching us. They're looking to see if we really live what we say we believe. Take a moment to examine your faith.

Have you ever seen those insects in a frame, perhaps in biology class? They are displayed to be examined by us. They give us a chance to see the intricacies of their formation which when living is buzzing around at fast rate. But in the frame they are seen how they truly are. In some ways that's what our faith says about us. The way we exercise our faith allows others to see the details of our form and our hearts desire to trust God.

On the free download page set up for you is a frame like those in biology class. Choose an insect (if bugs aren't your thing choose a butterfly) to draw. Find online a picture of the bug you choose and then make a detailed drawing of it within the frame. As you work draw the insect just as you see it in the picture. Pay careful attention to the curves of bugs form, as well as where the legs and antennae are anatomically. Use shadow to darken parts that are dark in the picture, you can also do this in color and match the color in your photo. Lastly write the scripture somewhere in the picture to make it a scripturedoodle, and put a name on your "faith" insect, it could be your name or it could be something symbolic like, "strong" or "growing" "budding" "new".

Share your finished product on social media with  
**#scripturedoodleexamineyourfaith** and **#scripturedoodle**.



A large rectangular frame with a double-line border. Inside the frame, at the bottom center, is a smaller rectangular box containing the text "NAME:" followed by a horizontal line for writing.

